

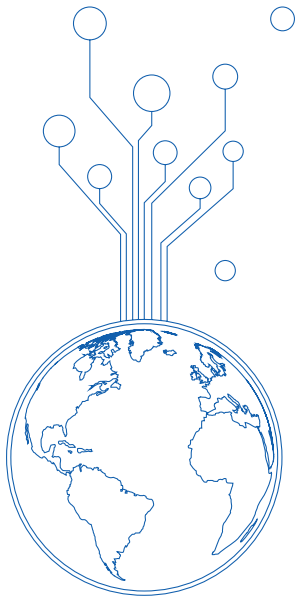
# Master in Management and Engineering (M.Sc.)

in Data and Decision Science



- Degree:** Master of Science (M.Sc.)  
**Focus:** Machine Learning, Artificial Intelligence, Operations Research, Decision Making  
**Target Group:** Young professionals with a STEM background  
**Duration:** 4 semesters full-time, including 1 semester Master Thesis  
**Location:** On campus in Aachen  
**Credit Points:** 120 ECTS  
**Teaching:** Highly interactive on-campus experiences

Visit our website to learn more about the admission requirements, tuition fees, and the application process. The QR tag can be found below.



**RWTH Aachen Business School GmbH**

Campus-Boulevard 30  
 Cluster Produktionstechnik  
 52074 Aachen, Germany  
[dds@business-school.rwth-aachen.de](mailto:dds@business-school.rwth-aachen.de)

## MME-DDS at a Glance

